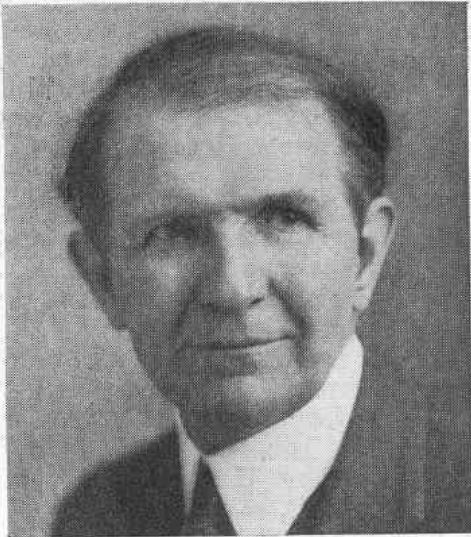


## ARTHUR FRENCH POOLE

ARTHUR FRENCH POOLE was born in Cumberland, Md., August 21, 1872.

In 1878 he moved from Cumberland to Washington, Pa., where he attended grade and high schools. He entered W. & J. College in the fall of 1888 with the class of 1892. At the end of the Freshman year he



took a partial course and graduated with the class of 1891 without obtaining a degree. He entered Leland Stanford Junior College at Palo Alto, Cal., in 1894 and graduated with the class of 1896 with the degree of A.B.

In the fall of 1896, he was a Draftsman with John A. Brashear, making Astronomical instruments, Allegheny, Penna. In 1897 he left the Brashear factory to work on a clock system of his own invention.

(from brochure from W&J College)

The years from 1897 to 1911 were spent in work on various inventions in the fields of electric clocks, wage computing devices, calculating machines and telephone systems.

In 1911 he entered the employ of the Wahl Company of Chicago, Illinois, at that time manufacturers of the Wahl Adding attachment now sold in connection with the Remington Typewriter. While with the Wahl Company he made a number of inventions which were embodied in this machine. In 1919 the Wahl Company's Adding Machine business was acquired by the Remington Accounting Machine Corporation, a subsidiary of the Remington Typewriter Company and he left the Wahl Company to take the position of Vice President and General Manager of the Remington Accounting Machine Corporation.

In 1923 he resigned from the Remington to devote himself to some original work, and in 1924 organized the Poole Manufacturing Co., Inc., which is at present manufacturing an Electric Clock of his invention, at Westport, Conn.

He was married in 1904 to Maryline Barnard of Ventura, California (Stanford, 1901). They have five children: Arthur B., Barbara, John H., Sarah Elizabeth and Franklin Bernard.

He is a member of the American Society of Mechanical Engineers and Engineer's and Hardware Clubs of New York City.

His present address is Westport, Conn.