

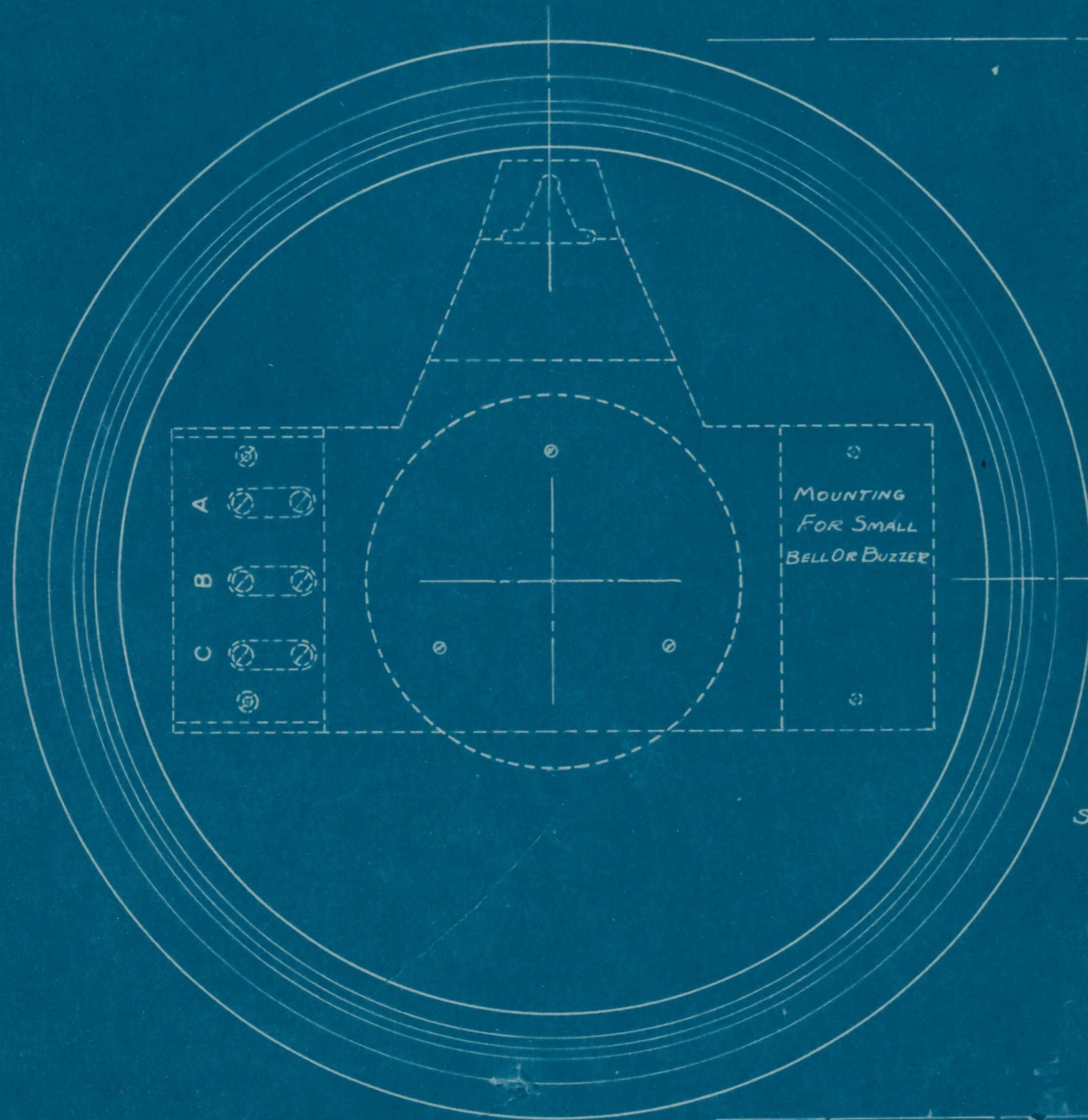
NOTE:

WEIGHT DRIVEN MASTER CLOCK & PROGRAM CABINET - 10" DEEP
BODY DEPTH 9"

SPRING DRIVEN MASTER CLOCK
8 5/8" DEEP - BODY DEPTH 7 5/8" ✓

FILE # 731

LANDIS PROGRAM CLOCK CO. WAYNESBORO, PA., U. S. A.	
Date 5-26-36	Scale 1/8" = 1"
MOUNTING & DIMENSIONS OF MASTER CLOCK CASES & DOUBLE PROGRAM CASES	
DRAWN BY S.H.M.	C-694
ENTERED BY S.H.M.	



MOUNTING
FOR SMALL
BELL OR BUZZER

SCREW IN EAR OF BOX

HANGER PLATE

SAME FOR 12" & 14" CLOCKS

5 1/4"

4" X 4" WALL BOX OR
LARGER AS NECESSARY
FOR CONDUIT & WIRING

MOVEMENT COVER

CONNECTOR BLOCK

SEE NOTE

NOTE:
12" DIAL CASE 14 1/8" OVERALL
14" DIAL CASE 17 3/4" OVERALL
10" DIAL CASE 12 1/16" OVERALL

FILE # 731

LANDIS PROGRAM CLOCK CO.
WAYNESBORO, PA., U. S. A.

Date 6-8-34 | Scale 1/2

DETAIL & MOUNTING OF
STYLE 2-M - 12" & 14" & 10"

SECONDARY CLOCKS

DRAWN BY S.H.M. | C-643
ENTERED BY S.H.M.