

Studio Clock System

with individual, automatic
seconds supervision

FEATURES

- * Exceptional accuracy—time tolerance plus or minus one-half second of Master Control time.
- * One dependable source of accurate time for all clocks in the system . . . an IBM Master Time Control.
- * Easy, external resetting for manual adjustments of minute and hour hands in the event of prolonged power interruptions.
- * Minute-by-minute automatic checking of each clock's accuracy.
- * Quiet clock operation for studio installation.
- * Continuously moving second, minute, and hour hands.

GENERAL DESCRIPTION

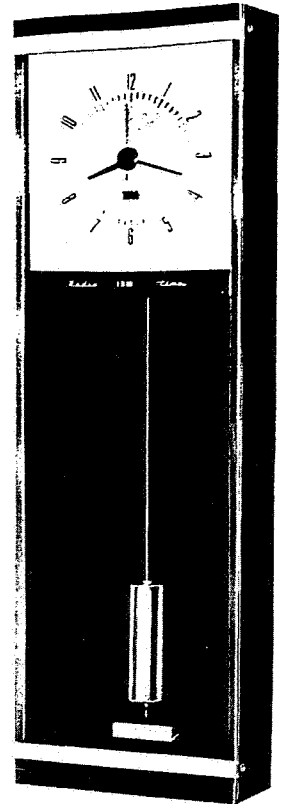
The IBM Studio Clock System is designed to meet radio and television broadcasters' requirements for a time indicating system which will maintain accurate and uniform time on all clocks installed in the studios. All sweep second hands of clocks in this system are supervised once each minute to co-ordinate them with the sweep second hand of the master control.

Each indicating clock in the system operates within a maximum of $\frac{1}{2}$ second fast or slow error of the master control's time. Seconds errors are corrected automatically each minute so that the time on the indicating clock is co-ordinated with the master control. This supervision takes place at the 30th second of each minute.

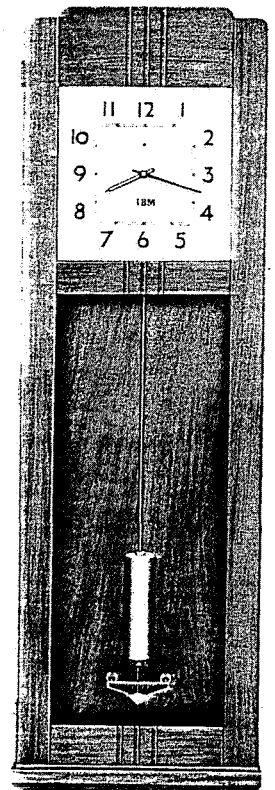
SYSTEM COMPONENTS

As the controlling medium and central time source, either IBM Type 25 Master Control (equipped with a mercurial or invar pendulum) or IBM Type 37 Radio-supervised Master Control, which is governed by the U. S. Bureau of Standards broadcast signals, is used. Clock regulation provided by these master controls is independent of normal frequency variations of local power.

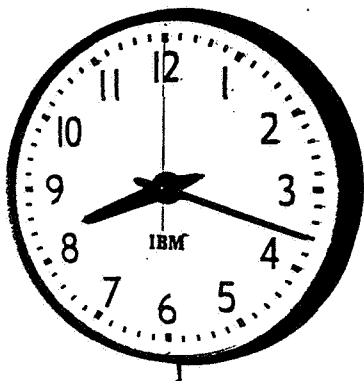
Indicating clocks used in this system are IBM Type 59, for surface mounting. IBM Type 601-3 Master Relay, used with the master control selected, provides supplemental relays and controls.



TYPE 37
RADIO-SUPERVISED
MASTER TIME CONTROL



TYPE 25
MASTER TIME
CONTROL



TYPE 59

ROUND SINGLE DIAL STUDIO CLOCK

Type 59: Surface Mounting

Dial Sizes: 9", 12", 15", 18".

Case: Drawn steel with gray enamel finish.

Numerals: Black Gothic design on off-white or sunburst aluminum dial.

Hands: Minute and hour hands are formed metal finished in black. Sweep-second hands are red.

Crystals: Convex glass. (Shatter-proof plastic crystals are available at extra cost when specified.)

The above clocks are equipped with a 12" pluggable cord.

TYPE 601-3 MASTER RELAY CONTROL

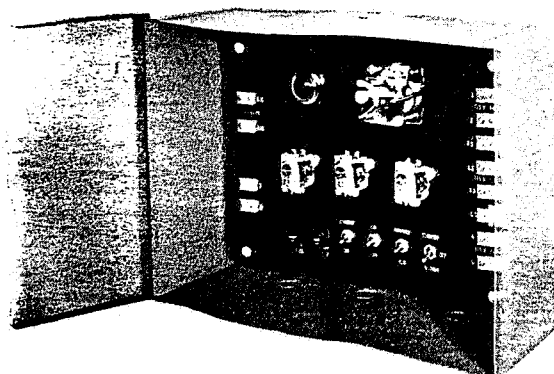
Electrical Energy—Input: 115 volts, 60 cycles AC (1150 volt-amperes)

Output: 115 volts AC and/or 24 volts DC

The Type 601-3 Master Relay Control for Studio Clock operation is mounted externally to either the Type 25 or Type 37 Master Time Controls. The Type 601-3 includes circuit relays and stand-by minute impulse control for operation of the Studio Clock System during maintenance. A neon light indicator for visual assurance of

synchronism of the stand-by impulse with the exact second is provided.

The combination of either Master Time Control and Type 601-3 Relay Control will operate a maximum of 50 studio clocks and one circuit of 50 wired clocks. (See wiring diagrams on page 4.)

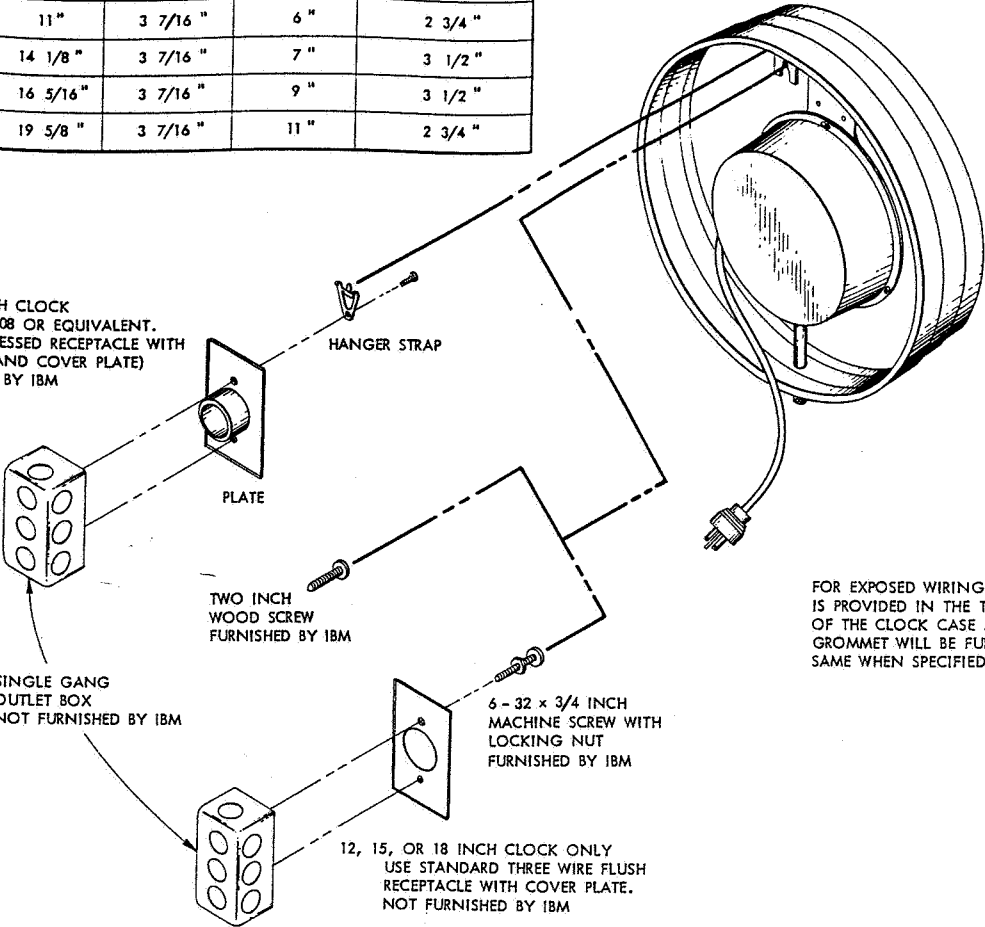


TYPE 601-3

Type 59 — Studio Clock

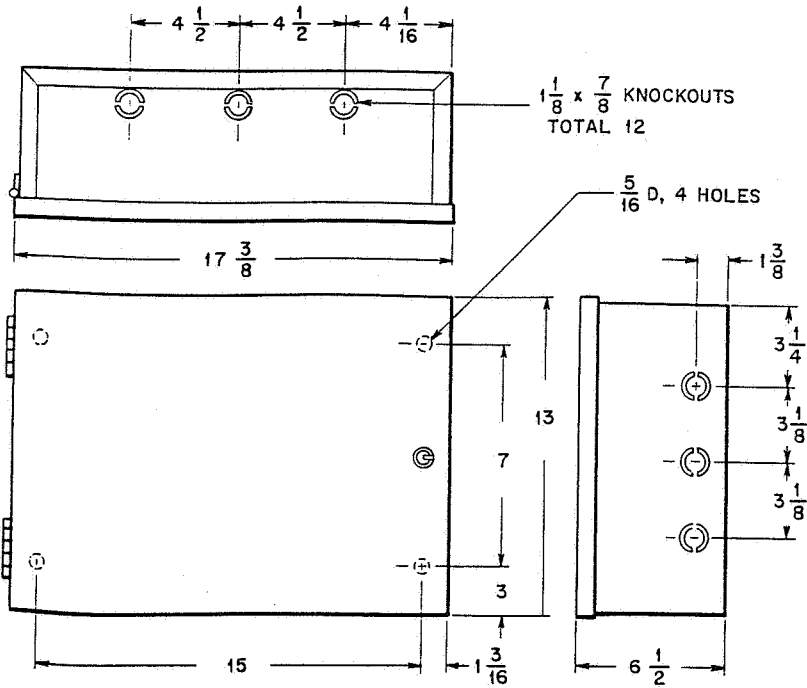
TYPE	DIAL DIAMETER	OUTSIDE DIAMETER	OVER-ALL PROJECTION FROM WALL	SHIPPING WEIGHT IN POUNDS	CENTER OF CLOCK BELOW CENTER OF OUTLET BOX
59-35	9"	11"	3 7/16"	6"	2 3/4"
59-45	12"	14 1/8"	3 7/16"	7"	3 1/2"
59-55	15"	16 5/16"	3 7/16"	9"	3 1/2"
59-75	18"	19 5/8"	3 7/16"	11"	2 3/4"

9, 12, 15, OR 18 INCH CLOCK
USE HUBBELL #7708 OR EQUIVALENT.
(THREE WIRE RECESSED RECEPTACLE WITH
HANGER STRAP AND COVER PLATE)
NOT FURNISHED BY IBM



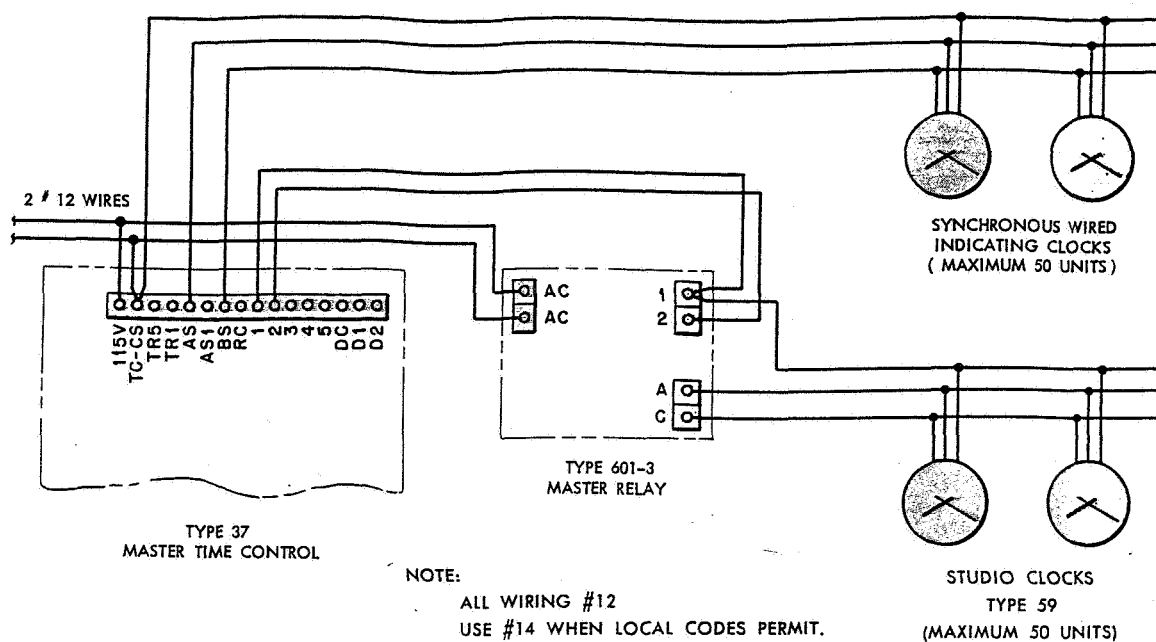
FOR EXPOSED WIRING A KNOCKOUT
IS PROVIDED IN THE TOP AND BOTTOM
OF THE CLOCK CASE AND A FIBER
GROMMET WILL BE FURNISHED FOR
SAME WHEN SPECIFIED

Type 601-3 — Master Relay Control

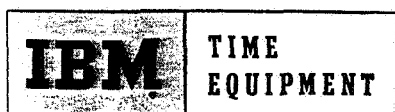
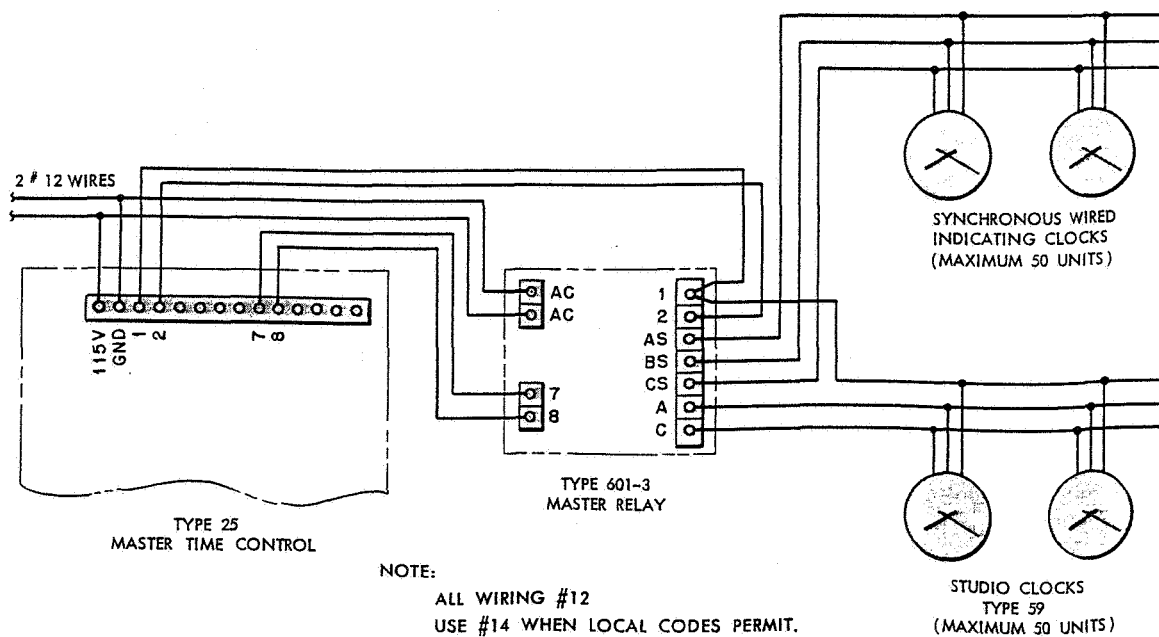


Systems Wiring

Using Type 37 Radio-Supervised Master Time Control



Using Type 25 Master Time Control



INTERNATIONAL BUSINESS MACHINES
CORPORATION
590 MADISON AVENUE • NEW YORK 22, NEW YORK

Branch Offices Throughout the United States